

NEWSLETTER

National Data Opt-out – update on consent process

We have published a new user guide explaining how to ensure compliance with the National Data Opt-out, as CRANE has not been granted an exemption.



There is specific guidance on how cleft services can comply with the opt-out for both the **audit** and **registry** functions of CRANE.

You can download the user guide, which includes a flow diagram, from our [website](#). If you have any questions, please do not hesitate to [contact us](#).

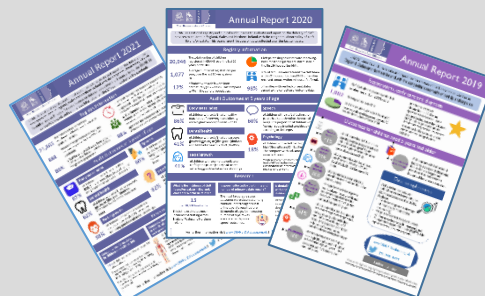
★ Upcoming data submission deadline ★

The deadline for submitting data for Q2 2022/23 is **Friday 25 November**.

Information about the six indicators for which CRANE provides data is available on our [website](#).

We have also now published the data collection milestones for 2023, available to download [here](#).

New infographics now available!



We have published easy-to-use infographics highlighting the key findings from the CRANE Annual Reports 2017–2021. Ideal for engaging patients and families, these new resources are available in the [‘Resources’](#) > [‘Infographics’](#) section of our website.

Save the date!



The next ‘Making it Better’ event will take place on **30 January 2023**. It will be an opportunity to reflect on the findings of the 2022 Annual Report, due to be published this December.

Please email us at crane@rcseng.ac.uk to register for the session.

On behalf of the CRANE Team

For more information on this NHS England, Wales and Northern Ireland funded programme of work, contact us on:

T: 020 7869 6610

E: crane@rcseng.ac.uk |

W: www.CRANE-Database.org.uk |  [@CRANE_news](https://twitter.com/CRANE_news)

Thoughts or suggestions? Why not drop us an email at CRANE@rcseng.ac.uk